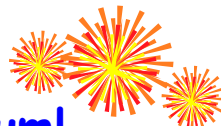


SPARTANBURG SKI & OUTING CLUB



Welcome to the 3rd Millennium!



Jan. 4th: Club Meeting - Chili Cook-Off



Jan. 10th: Mini-Social at El Molcajete



Jan. 26th-28th: Winter Roan Mountain
Ski Trip



RACES

Jan. 5th-7th: Race #2 - Silvercreek I

Jan. 20th-21st: Race #3 - Hawksnest



JANUARY 2001

<http://www.geocities.com/Pipeline/6821>

Ted's Corner

Hope everybody managed to get through the holidays without too much trouble. It's time to work off the thousands of extra calories you gained over Christmas and New Years so break out those skis and hit the slopes. Go support the race team.

We had an excellent membership meeting in December thanks to Barbara and Mike Rogers, Charles Darling, Bryan Bobo and Marcy Cassady. The Chinese auction was a ball, the wine and cheese selections were outstanding and we had a visit from Bubba Claus (A pickup truck pulled by eight white tailed deer?).

Thanks to Alison for putting together the ski club Christmas party at Ellis's. A good time was had by all, even if it did take three times to get the check right. The food was great and the company was even better.

Word has it that Pedro is the first casualty of the 2000-2001 ski season. He suffered a severely broken ankle at Steamboat the first day out. We hope everything heals properly and he gets to ski again before the season ends. Pedro definitely deserves an Ohhh _ _ _ _ _!!! for this one. Good luck Pedro.

Got your stuff packed for Aspen yet? Time is getting short. There are still a few openings so if you want to go or know someone that does; it's not too late.

Taylor Bomar has done an excellent job with the web site. Check it out. Pictures and everything. The web site is www.geocities.com/pipeline/6821/

Ted



CHILI COOKOFF
JANUARY 4 MEMBERSHIP MEETING
7:30 at the Arts Center



Please call Barbara (578-0618) if you re bringing chili so she can be sure she has enough plug-ins and tables set up.

We will also present our annual gift to Winter Special Olympics.



HOLA AMIGOS!

COME JOIN US ON WEDNESDAY, THE 10TH FOR A HOT & SPICY
NIGHT IN JANUARY

6:30 PM

EL MOLCAJETE

LOCATED NEXT TO DEMETRIE'S IN DUNCAN
(HWY 290)

SIGN UP AT THE JANUARY MEETING, CALL OR E-MAIL ME AT
KIMBALLA@MSN.COM IF YOU WISH TO ATTEND. COME ENJOY
AN EVENING AND LIVE "LA VIDA LOCA Y CALIENTE Y PICANTE!"



ANNUAL ROAN MOUNTAIN WINTER TRIP/CLUB RACE

January 26-28,2001

It's time to think about snow, skiing, racing—all these things that form the foundation of our club. We have 10 cabins reserved at Roan Mountain State Park for Friday & Saturday nights, January 26 & 27.

All cabins are in the "new" section & are designed to accommodate up to 6 people. There is a bedroom with a double bed & a loft with 2 double beds divided by a partition. Each cabin has 2 baths. Sorry, there is no hide-a-bed.



Mark McCall, our race director, will be conducting our club race on Saturday at Sugar Mountain. Group lift tickets will be available for advance sale at a substantial saving.

If you can find a more reasonable, more fun weekend than this one, you should take it! (I know you cannot.) Entire cabins for the weekend are \$175.00 each. For those that don't want a whole cabin, the cost per bed for the weekend is \$60.00. (\$30 if you share a bed.)

50% deposit is due by the December membership meeting with the balance due by the January meeting.

Call me if you need further details.

Mike Rogers
Overnight Trips
(H) 864-578-0618
(O) 864-848-6514

The Club Race will be held on Saturday Jan 27 at Sugar Mountain in conjunction with the Roan Mountain weekend. The race will start at 9:30AM at the top of Big Red. The cost will be \$34 for lift tickets and \$5 for the race. Give your payment in CASH to Mark McCall on Friday night at Roan Mountain and pick up your lift tickets from Mark Saturday morning before 9AM at Sugar Mountain.

Crescent has changed the format of the Skiliner (Crescent's newsletter) and it is now too big to include as part of our newsletter, (and is also in an incompatible format.) Additionally, they are now distributing it via E-Mail to club officers with E-Mail addresses. Other members with Internet access may download the ".PDF" (Adobe Acrobat format) file from Crescent's Web site at <http://www.rtpnet.org/~crescent/skiliner.htm>. (You may also need to download the Adobe Acrobat reader program so you can view the newsletter.) A **limited** number of copies will be printed and made available at the monthly club meetings.

PACIFIC TRAIL[®]

ALPINE SKI CENTER

GREER
HEATING & AIR CONDITIONING CO., INC.
 JAKE GREER — LEE GREER
 SPARTANBURG SC - 30 YEARS EXPERIENCE

LENNOX[®]

RESIDENTIAL • COMMERCIAL
HI-EFFICIENCY

HEAT PUMPS • GAS FURNACES

AIR CONDITIONING

SALES • SERVICE • INSTALLATION

WE SERVICE & REPAIR ALL BRANDS

24 HOUR EMERGENCY SERVICE

FINANCING AVAILABLE

STATE LICENSED • BONDED • INSURED



ASK ABOUT OUR GUARANTEED PRICING!



576-7000



This gift certificate is redeemable for \$20 off your first service call or \$100.00 off the purchase of a new heating and a/c system.

Race training clinics have attracted Spartanburg skiers to the slopes. Carol McCall, Mark McCall and Danny Gosnell started the season Nov 26 with the Crescent Ski Council development training at Appalachian. Pedro McGuire and Ed Chandler attended the Steamboat Race Camp Dec 2-9. Sorry about your ankle Pedro. Sugar Mountain Race Camp Dec 8-10 brought out Elke Schoellkopf, Pat Parker, Marcy Cassidy, Carol McCall, Mark McCall, Bryan Bobo and Bobby Joe Collins. Competition between Pat and Elke was strong for best fall after the finish line. The next CSC Development Training will be at Hawksnest Jan 28. These offer training in running gates and an opportunity to qualify for CSC racing. This is the Sunday of our Roan Mountain club weekend.

Race Report = Five members of the Spartanburg Race Team competed in the Dec 16&17 CSC races at Appalachian. Alison Kimball, Carol McCall, Bryan Bobo, Mark McCall and Danny Gosnell slalomed in the rain on Saturday and giant slalomed against the wind on Sunday. Bryan claims he would have won his flight if that gate hadn't jumped in his way and knocked a ski off. The giant slalom start required some vigorous poling, so vigorous that one of Danny's poles stuck in the snow and he had to finish his run without it. Carol McCall is the points leader for our club. She received a Kryptonite ski lock for her second in flight finish.

Many thanks to those of you who attended our Christmas party at Ellis', December 7th. The food was wonderful (especially the pumpkin cheesecake, as Mrs. Bobo will gladly testify to). The ambiance was very nice and we were compensated for losing our private room with complimentary wine during dinner. If you missed it this year, you missed a good one. What a fantastic way to close out our year ...

Alison

Looking to buy a ski outfit - size 10?
Call Pat Parker at 585-5585



Rent everything you need At Alpine Ski Center...

Shape Skis / Snowboards / Skiboards/ Clothing

Choose from the area's best selection of Rental Equipment

- Huge selection of equipment for every skill level
- Snowboards w/ Strap or Step-in Bindings!
- Convenient Pick-up and Return Times!

ALPINE SKI CENTER

2104 Augusta St. Greenville, 241-0550

Ron Scott
Race Director
Sponsorship Director
W 919/515-6752
H 919/362-5689
rscott@eos.ncsu.edu
ronski@att.net

2000/2001 Crescent Ski Council Race Schedule

November 26, 2000	CSC Development Training at Appalachian 8:45
December 2-9, 2000	Steamboat Race Camp Call L.T.A 704 332 1090
December 2000	Killington Race Camp Call 802 422 6797 800 432 0100
December 10, 2000	CSC Development Training at Appalachian 8:45
December 8-10, 2000	Sugar Mt. Race Camp Call Kim Jöchl 828 898 4521 x224
January 28, 2001	CSC Development Training at Hawksnest 8:45

Race Format - Two runs of Slalom on Saturdays and two runs of Giant Slalom on Sundays

December 16 & 17, 2000	Appalachian, NC Race	9:30
January 5, 6, & 7, 2001	SilverCreek, WV Race	9:30
January 20, 2001	Hawksnest, NC Race Slalom	9:30
January 21, 2001	Beech Mt., NC Race GS	9:30
Jan. 27 – Feb. 3, 2001	SKI WEEK LAKE LOUISE/BANFF, CANADA	
Feb. 4 & Feb. 5, 2001	Cupp Run Challenge at Snowshoe, WV	
February 10 & 11, 2001	Sugar MT., NC Race	9:00
February 24, 2001	Canaan Valley, WV Slalom	9:30
February 25, 2001	Timberline, WV GS	9:30
February 25, 2001	Sugar Cup Slalom Sugar Mt., NC Call Sugar Mt.	
March 9,10, & 11, 2001	Crescent Cup, SilverCreek, WV	9:30
March 10, 2001	Subaru Race at Snowshoe, WV	TBA
March 17 – 24, 2001	SKI WEEK SUNDAY RIVER, MAINE	

DEADLINES FOR 2000-20001 CRESCENT RACE/SKI WEEKENDS

Again, this year clubs will be assessed a \$10.00 fee for EACH missed deadline. These club deadlines are set as close to resort deadlines as possible to allow you as much time as contracts allow Crescent. We continue to receive payment late and are left no choice in charging late fees.

Below is a list of deadlines you are expected to meet. Each club has the potential for \$50.00 in late fees for each weekend. Envelopes will be kept on file to verify postmark dates. If there are questions the club Trip Leader should contact the Crescent Trip Leader.

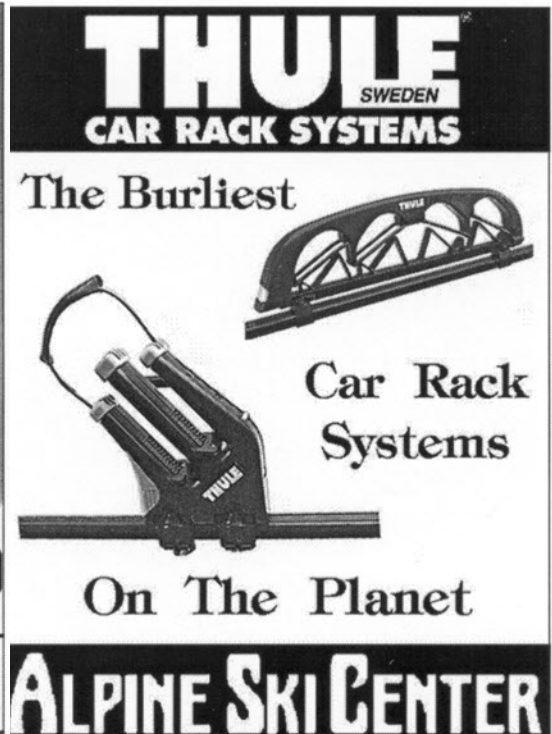
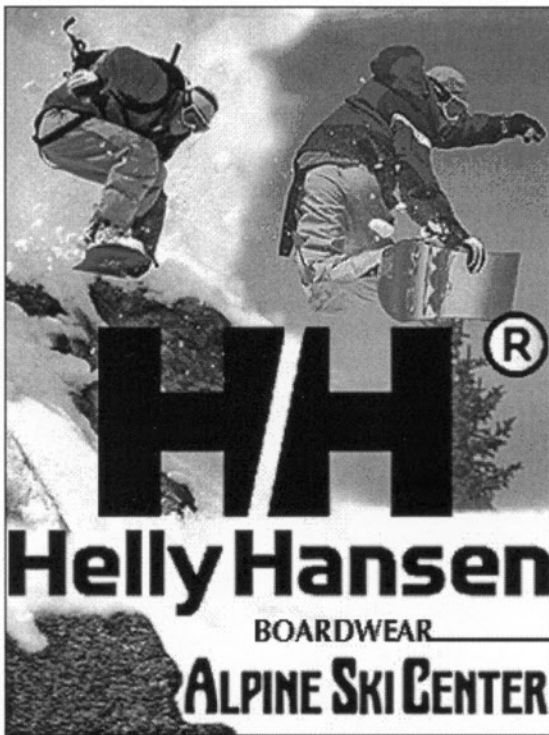
TRIP	INFORMATION DUE	DUE DATE
Silvercreek I	Confirmation form	November 1 st , 2000
Silvercreek I	50 % deposit	November 15 th , 2000
Canaan Valley	Confirmation form	November 15 th , 2000
Canaan Valley	50 % deposit	November 30 th , 2000
Silvercreek I	Balance	December 15 th , 2000
Silvercreek I	Room list	December 15 th , 2000
Silvercreek I	Room changes	December 27 th , 2000
Canaan Valley	Balance	January 3 rd , 2001
Canaan Valley	Room list	January 3 rd , 2001
Silvercreek II	Confirmation form	January 3 rd , 2001
Canaan Valley	Room changes	January 14 th , 2001
Silvercreek II	50 % deposit	January 14 th , 2001
Silvercreek II	Balance	February 11 th , 2001
Silvercreek II	Room list	February 11 th , 2001
Silvercreek II	Room changes	February 20 th , 2001

North Carolina due dates need to be met; however these are made by individuals or a club's race director and will not be penalized.

RACE DATES	INFORMATION DUE	DUE DATE
December 16 th -17 th , 2000	Block Rooms	ASAP
December 16 th -17 th , 2000	50% deposit	At time of reservation
December 16 th -17 th , 2000	Balance(check-out)	December 17 th , 2000
January 20 th -21 st , 2001	Block Rooms	ASAP
January 20 th -21 st , 2001	50% deposit	At time of reservation
January 20 th -21 st , 2001	Balance(check-out)	January 21 st , 2001
February 24 th -25 th , 2001	Block Rooms	ASAP
February 24 th -25 th , 2001	50% deposit	At time of reservation
February 24 th -25 th , 2001	Balance(check-out)	February 25 th , 2001



February's mini-social will be held in Landrum, SC. The Hare and The Hound is a charming little restaurant located on the main strip of the town. Put Wednesday, February 21 on your calendar ... more in next month's newsletter.



CRESCENT SKI COUNCIL RACE SERIES SPONSORS OF THE MONTH

The following business have donated merchandise and or certificates to the Crescent Ski Council. Their merchandise and certificates will be used as prizes to the top three finishers in each flight of the CSC Race Series. Please support these establishments and product lines at every possible opportunity.

SPONSOR
Crescent Racing



INTERACT
weather.com *with* **THE WEATHER CHANNEL**

SPONSOR
Crescent Racing

SUBARU 
The Beauty of All-Wheel Drive.



Midway.
AIRLINES

DOLLAR
RENT A CAR
DOLLAR MAKES SENSE.



CRESTED BUTTE
The Last Great Colorado Ski Town

MAMMOTH
CALIFORNIA



EXTREME COMFORT
Personal Heating System

YAKIMA

sugarloaf/usa
SNOWPLACE OF THE EAST
R.R. 1 Box 5000
Carrabassett Valley ME, 04847-9706
207-237-2000
www.sugarloaf.com
info@sugarloaf.com




DURANGO
MOUNTAIN RESORT
COLORADO

bolle
WWW.BOLLE.COM

 **Aspen/Snowmass**





CRESCENT SKI COUNCIL ANNUAL SPRING CONVENTION at THE KINGSTON PLANTATION

Myrtle Beach, South Carolina

April 19 - 22, 2001

Convention Coordinator: David Pere, 407-862-6130 (H), 407-695-8485 (W)
407-862-8456 (FAX), Email: ApresSki1@AOL.COM

THE CRESCENT SKI COUNCIL is looking to make this years Spring Convention bigger and better than ever. Join with Members of the Crescent Clubs and Reps and Exhibitors from the Ski Industry from all over the world for a fantastic weekend of fun and camaraderie. Count on a great golf tournament, our first time mixed doubles tennis tournament, great parties, friendly hospitality, glorious beaches and the famous Beach Olympics, and everything highlighted by a fantastic Trade Show. Add to that the glamour of Myrtle Beach with their sensational shopping, legendary dining and world famed entertainers and you have the makings of one unforgettable Spring Convention.

KINGSTON PLANTATION - One of the most sophisticated and luxurious meeting destinations on the Mid Atlantic coast. This 145 acre ocean front paradise is complete with beautifully landscaped grounds and park like gardens and sparkling white sand beaches. Enjoy **SPLASH!**, the 50,000 square foot pool complex where you are invited to swim, float, sun or just relax. Restaurant and lounge on premises. The Sports and Health Club features an indoor lap pool, an outdoor Jr. Olympic sized swimming pool, three racquet ball and squash courts, aerobic studios, weight training and cardio-vascular equipment, sauna, whirlpool, and 13 tennis courts complimented by a full service pro shop.

LODGING - The **Kingston Plantation** offers well furnished and completely equipped condos and villas. Amenities include a full kitchen with coffee maker, microwave and dishwasher, washer and dryer, cable TV, telephones, and maid service. Bedding Arrangements - the master bedroom has one queen bed, the second bedroom has two twins and the living room has a queen sized pull out sofa.

PRICE PER PERSON FOR LODGING: 2 BEDROOM/ 2 BATH CONDOS OR VILLAS

	People per Unit	2	3	4	5
4 Days / 3 Nights	price per person	\$241.	\$176.	\$143.	\$124.
3 Days / 2 Nights	price per person	\$176.	\$132.	\$111.	\$98.

PRICE INCLUDES

Lodging and Taxes
DJ Party on Friday Night**

Early Bird Reception on Thursday Night**

Beach Olympics on Saturday

Complete use of the Sports & Health Club

*** Complimentary beer, wine and soft drinks*

Trade Show on Friday Night**

Saturday Night Theme Party with Live Band**

AVAILABILITY - First come basis. SPACE IS LIMITED.

OPTIONAL ACTIVITIES

Golf Tournament on Friday (Scramble Format)
Mixed Doubles Tennis Tournament on Thursday

Thursday Night Dinner
Thursday Night - Carolina Opry Show

Walleiball
Racquetball

CANCELLATION FEES

By January 18
January 19 - April 18

No Penalty

\$15. per person plus any additional costs sustained

PAYMENT: Please fill out a registration form and make check payable to
Crescent Ski Council and mail to:

David Pere
110 North Spring Trail
Altamonte Springs, FL 32714

Meet the Board

This is the forth installment of bios of board members for those of you that don't know the board members that well. We will continue this until all the board members have been introduced.

Mike Rogers - Overnight Trips

Mike is originally from Greer. He attended Furman University where he met his wife Barbara. Mike and Barbara have been married for 32 years. Mike has been in the insurance claims business for 33 years. He started skiing in 1976 in North Carolina. Mike has been on numerous ski vacations in New England and out west.

In 1980 Mike joined the Spartanburg Ski Club. He has held numerous board positions including president. He was also trip director on the infamous "Eastern went bankrupt" trip to Aspen.

Mike and Barbara own a condo at Sugar Mountain where Mike claims he doesn't get to spend enough time. His other interests include dining out, golf and photography. He also has three dogs.

When Mike retires he and Barbara plan to explore the western United States.

One of Mike's heroes is Herb Lindsay because Mike says "Herb can go to Snowmass every season and make cookies".

Shelia Haynes -Treasurer

Shelia is another original South Carolinian originally from Spartanburg. She is a Spartanburg High School and Cecil's Business College graduate. Shelia is married and has four children and four grandchildren. She started skiing in 1972 and also joined the ski club that year. Shelia has held numerous board positions.

Her interests include reading, knitting and other needlework, dining out and traveling around the country with their granddaughter Ceci.

Shelia has worked for Graf Metallic for 25 years and has never lived outside of Spartanburg County. Her ambition is to live long enough to visit all 50 states.

Marcy Cassady - Publicity

Marcy is from New York State where she lived for 16 years. She started skiing at age 16 in Vermont. Marcy came south to attend Converse College and has a B.A. in special education. She taught 5, 6 and 7 year olds at the South Carolina school for the Blind. She has also taught in several other area schools.

Marcy joined the Spartanburg County Department of Social Services ten years ago and is a Family Independence Case Manager.

She began working for the Red Cross at age nine, was a water safety instructor and now is involved with their Disaster Services area. Marcy has worked many national disasters including hurricanes in Puerto Rico and recently Floyd in Myrtle Beach. She was also involved in the Spartanburg area Girl Scouts.

Marcy joined the ski club in 1997. Her other interests include swimming, genealogy, Irish CARA club and the German Club.

GREENVILLE GRROWL GAME !



“GRREAT” NEWS ! THE SPARTANBURG SKI AND OUTING CLUB HAS “GEARRED” UP TO SEE A GRROWL GAME! DON’T MISS ALL OF THE ACTION AND “ICE FIGHTS”.

WE HAVE 20 TICKETS TO WATCH THEM PLAY ON SATURDAY FEBRUARY 17, 2001 AT 7 PM. THE COST IS \$ 7.00 PER PERSON. FIRST PAYS, FIRST GOES! GET THEM AT THE JANUARY MEETING OR CALL JOY BOBO AT 433-0802.

Scavenger Hunt 2001

Do you have a 1951 coin or a lunch pail with the Lone Ranger on it? No? Well maybe you can find a Nixon campaign pin or a pair of red, white and blue suspenders.

We're playing a new game this year. Instead of cards or board games we'll be on a hunt.

Get your team together or if you think you're a good enough scavenger, hunt by yourself.

Read your February and March newsletters for more details. "The Hunt" is planned for a Saturday in March.

Conni

SPARTANBURG SKI & OUTING CLUB
BOARD OF DIRECTORS
2000-2001

POSITION	NAME	HOME PHONE	WORK PHONE
PRESIDENT	TED MUELLER	592-3405	433-2220
PAST PRESIDENT	JOY BOBO	433-0802	
VICE PRESIDENT	DEL HAYNES	592-0047	
TREASURER	SHELIA HAYNES	592-0047	
SECRETARY	CHARLES DARLING	574-0376	
MEMBERSHIP	TED MUELLER	592-3405	433-2220
ADVERTISING	PAT PARKER	585-5585	433-2460
PUBLICITY	MARCY CASSADY	585-1718	596-3114
FUNDRAISING	BRYAN BOBO	433-0802	433-8640
NEWSLETTER	TAYLOR BOMAR	576-3776	574-7245 x105
PROGRAMS	BARBARA ROGERS	578-0618	
SOCIAL	ALISON KIMBALL	814-5372	503-5900
DAY TRIPS	JOY BOBOs	433-0802	
CRESCENT OVERNIGHT	CAROL McCALL	828-859-5500	
OVERNIGHT TRIPS	MIKE ROGERS	578-0618	848-6514
RACING	MARK McCALL	828-859-5500	828-859-5839
SCRAPBOOK	DOUG TINSLEY	579-1051	
SPECIAL EVENTS	CONNI HARRELL	592-3405	
	HERB LINDSAY	576-0322	

SPARTANBURG SKI & OUTING CLUB
PO BOX 2864
SPARTANBURG, SC 29304

