

SPARTANBURG SKI AND OUTING CLUB

February 5 7:00pm Club Meeting

Piedmont Blood Center

Page 9

February 6~8

Roan Mountain Weekend

February 28

Bingo for Bucks

Page 9

April 2

Annual Meeting

@

Piedmont Club

FEBRUARY 2009

<http://www.spartanburgskiclub.org>

Ted's Corner

Just got back from a very cold ski trip. You think it got cold here, how about waking up to 18 below. New Hampshire and Maine do have some great skiing though and their reputation for bad snow and ice is somewhat overrated. Try Sunday River or Attitash; they have some great runs.

We had a great turnout at the last membership meeting. Keep it up. Maybe it was the chili that brought everyone there. Congratulations to Joy and Dianne for bringing the winning chilies.

If you survived the holidays and are ready to get back in the swing of things, join us at the Rogers for Bingo night on the 28th. It's more fun than it sounds especially if you win. See more about Bingo in the rest of the newsletter. Also we have a mini social coming up at Steak and Spirits (formerly Steak and Ale) on February 17th at 6:30. Let's see if we can get a big crowd together.

Don't forget to sign up for the Crescent spring conference. It's a great way to bring in the warm weather and enjoy the beach. It's early enough to where there won't be a lot of crowds.

There are still a few spaces available for Roan Mountain, so if you have suddenly decided to join the crowd, get a hold of Carol McCall and you might be able to get a last minute spot. From the looks of the weather it could be a good skiing weekend.

Get your reservations in for the Piedmont Club April meeting and initiation of officers for the 2009-2010 term. The cost is \$35 with dinner and drinks included. You also get to see the rest of the ski club members dressed up. That's worth \$35 by itself.

The nominating committee met in January to consider nominees for Spartanburg Ski and Outing Club officers for the next term beginning in April. The nominees as proposed by the committee are:

President - Alison Kimball
Vice President – Sammi Linder
Treasurer – Art Mall
Secretary – Joy Bobo

The nominees will be presented at the February membership meeting and additional nominees can be added to the slate at that meeting. If you have anyone you wish to nominate don't miss the meeting. All nominees for all positions will be voted on at the membership meeting in March. Make sure that you attend that meeting so that your vote can be counted.

Ted

SCHEDULE of CURRENT & UPCOMING EVENTS

Mark Your Calendars !

February

5 Thursday 7:00 Club Meeting - Piedmont Blood Center > page 8

6~8 Roan Mountain Weekend

28 Saturday 6:30PM Bingo for Bucks > page 8

March

5 Thursday Club Meeting TBA

5~8 Silvercreek Weekend

14~21 CSC Western Trip – Keystone, Colorado

April

2 Thursday 6:30PM Annual Meeting –Piedmont Club

23~26 CSC Spring Conference > page 6



Ron Scott - Race Director

H 919/362-5689

Rscott013nc.rr.com

Race Format - Two runs of Slalom on Saturdays and two runs of Giant Slalom on Sundays

January 31 Feb. 1, 2009	Sugar Mt., NC Race	<u>9:00 Park Comp.</u>
February 2, 2009	Cupp Run Challenge at Snowshoe, WV	
February 7 & 8, 2009	Appalachian, NC Race	<u>9:00 Park Comp.</u>
February 21 & 22, 2009	Beech Mt., NC	<u>9:30 Park Comp.</u>
March 1, 2009	Dick Trundy/Sugar Cup GS Sugar Mt.	<u>9:00</u>
March 6, 7, & 8, 2009	<u>Crescent Cup</u> , SilverCreek, WV	<u>9:30 Park Comp.</u>
March 2 -3, 2009	Governor's Cup Race at Timberline, WV	
	kathysaumure@cs.com	
March, 26 - 29, 2009	NASTAR Finals	Rich Mead



AND THE WINNER IS.....

The 2009 Chili Cookoff brought in 8 entries from our club. All were excellent, and I don't think there was a pot left that wasn't empty. The 2009 Chili Cookoff Winner is Joy Bobo! In the event Joy cannot fulfill her bragging rights for the year, our First Runner Up, Diane Butscher will step in for Joy. Thank you ladies and to all the contestants who went the extra step to make this year's cook off most delicious and a great success!

CRESCENT SKI RACING

Spartanburg racers competed at Appalachian December 20 and 21 and Sugar Mountain January 10 and 11.

Jake Parrish is our fastest racer and serves as one of the pace setters. At Appalachian he was 4th overall in slalom [out of 155 competitors] and 5th overall in GS. In flight 3 Kent Welke took 1st in slalom and 4th in Gs. In flight 12 Kevin McCall was 3rd in slalom. In flight 14 Katelin McCall was 1st in slalom and 4th in GS. In flight 16 Marcy Cassady was 3rd in GS. Also racing were Carol McCall, Mark McCall and Elke Schoellkopf.



At **Sugar Mountain** Jake's first Slalom run was the second fastest overall but he had a mishap in his second run. Katelin McCall moved up to flight 13 where she took 1st place in both slalom and GS. Grandfather Mark took 2nd place in GS. In flight 14 Elke Schoellkopf placed 2nd in slalom. In flight 15 Marcy Cassady placed 3rd in slalom. In flight 15 Taylor Bomar placed 2nd in slalom and 1st in GS. Also racing were Sam Linder, Carol and Kevin McCall.

In our four days of racing we have skied on ice, crud and good snow. We've seen sun, rain and fog. Above all, we've had a great time.

Mark McCall

BEACH PARTY 2009!!!!!!!!!!!!!!

Hey, it's never too early to be planning that beach trip. This year Crescent is celebrating it's 40th Anniversary...WOOO HOOO! The dates are April 23 - 26. Kinston Plantation at North Myrtle Beach is the place. There  will be rooms in the high rise (beach side) or less expensive condos just a short walk to the beach. Carol should have all the information on cost at the February meeting, so come on and sign up early. If you've ever been you know it's a blast. If you've never been, it's a great weekend trip get away.

And don't forget, Crescent is asking for old memorabilia so if you have something you can donate that is old and you want to get rid of it, I'm sure they can use it. Gloves, mittens, hats, posters, anything from a trip with a logo on it, pictures, whatever.....And if you have something that is special to you and you want it returned after the party, that can be arranged too.



So don't forget to let Carol McCall know you are interested so our Club has enough rooms for a great weekend!

Conni Harrell
Crescent Ski Council Rep



40th Anniversary
CRESCENT SKI COUNCIL
SPRING CONVENTION

April 23 – 26, 2009
Kingston Plantation
9800 Queensway Blvd.
Myrtle Beach, SC
843-449-0006

LODGING INFORMATION

SITE INFORMATION

Kingston Plantation is a 145-acre oceanfront paradise complete with beautifully landscaped grounds and sparkling white sand beaches. Enjoy SPLASH!, the 50,000 square foot pool complex where you can swim, float, sun or just relax. There is a restaurant and lounge on the premises. The Sports and Health Club features an indoor lap pool, cardio-vascular equipment, sauna, whirlpool, and 13 tennis courts.

LODGING UNITS

The Kingston Plantation offers well-furnished and completely equipped condos and villas. Amenities include a full kitchen with coffee maker, microwave and dishwasher, washer and dryer, cable TV, telephones, and maid service.

PRICE PER PERSON:

ON-SITE 1 BEDROOM/1 BATH CONDO (1 queen)

# of People Per Unit	2
2 Nights Stay	\$170
3 Nights Stay	\$241

ON-SITE 2 BEDROOM/2 BATH CONDO (1 queen; 2 twins; Queen-sized sofa)

# of People Per Unit	2	3	4	5	6
2 Nights Stay	\$190	\$141	\$116	\$100	\$91
3 Nights Stay	\$271	\$195	\$158	\$136	\$121

BRIGHTON TOWER – OCEAN VIEW 2 BEDROOM/2 BATH CONDO (1 queen; 2 twins; Queen-sized sofa)

# of People Per Unit	2	3	4	5	6
2 Nights Stay	\$257	\$186	\$140	\$127	\$ 113
3 Nights Stay	\$371	\$262	\$208	\$176	\$154

***OFF-SITE FEE: \$45.00**

***ONE EVENT ONLY FEE: \$25.00** (EARLY BIRD, TRADE SHOW, FRI. NIGHT PARTY, SAT. NIGHT PARTY)

Please designate which one you will be attending. If your name isn't on the door list, you will have to pay at the door.

PRICE INCLUDES:

Lodging and Taxes

*Early Bird Reception on Thursday Night

*Trade Show on Friday Night**

*DJ Party on Friday Night**

Complete use of Sports & Health Club

*Beach Olympics on Saturday

*Saturday Night Theme Party w/DJ**

***Includes complimentary beverages*

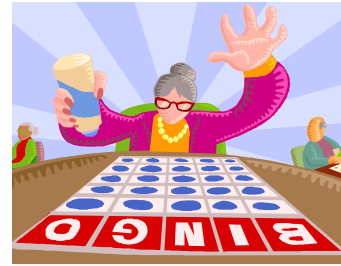
NOTE: All lodging shall be assigned to clubs. Use the Club Registration Form to reserve all units.

%%%%%%%%%

Steak & Spirits will be the restaurant of our Tuesday, February 17th mini social. Formerly called "Steak & Ale" it's located off Hearon Circle on Charisma Drive. They still have their great salad bar and intimate atmosphere. Check out their menu at www.steakandspirits.com

**** BINGO FOR BUCKS ****

SATURDAY, FEBRUARY 28th
6:00 pm ~



HOSTED BY MIKE & BARBARA ROGERS
404 Quail Ridge Circle, Boiling Springs



Bring your dollar bills and let Mike call your numbers!!
Guaranteed winner every game!!!
Please bring an hors d'oeuvre to share with the players,
beverages will be provided. RSVP is requested please,
contact me ~ thanks.

Alison

~~~~~  
**PIEDMONT BLOOD CENTER**

Please plan to attend our membership meeting in February, as our guest speaker will be Sharon Adams, Director of the Piedmont Blood Center located here in Spartanburg. Ms. Adams will be explaining to us the newest technology in blood and platelet donations. She will explain to us what the Center does, what it needs and how you can benefit from its service. As usual, we begin at 7 PM for socializing; our speaker will begin at 7:30 followed by our business portion of the meeting.

Conni Harrell  
Program Director



# Annual Spartanburg Ski and Outing Club Race

The race was held at Sugar Mountain on Sunday, January 25<sup>th</sup>. Here are the results.

|        |                 |       |                  |               |
|--------|-----------------|-------|------------------|---------------|
| LADIES | 1 <sup>st</sup> | Place | Katelin McCall   | Gold Nastar   |
|        | 2 <sup>nd</sup> | Place | Elke Schoellkopf | Silver Nastar |
|        | 3 <sup>rd</sup> | Place | Marcy Cassady    | Bronze Nastar |
| MEN    | 1 <sup>st</sup> | Place | Tom Hambel       | Gold Nastar   |
|        | 2 <sup>nd</sup> | Place | Taylor Bomar     | Silver Nastar |
|        | 3 <sup>rd</sup> | Place | Sam Linder       | Bronze Nastar |

Congratulations to all the medallists and the other hardy participants, Daniel Linder, Carol McCall, Max Clary, Mark McCall and Bob Butscher.

#####

## 2009 ~ What do you want to do this year?

Here are some of the events that we could do in the following year:

- ❖ Bowling & Dinner Night
- ❖ Trip to Discovery Place
- ❖ Camping & Floating on the French Broad River
- ❖ Mountain hikes
- ❖ Murder mystery party
- ❖ Hickory Knob Weekend
- ❖ Lake Bowen Float
- ❖ Flat Rock Playhouse
- ❖ Wine Tasting Party
- ❖ ?????????????????????????????????????????????????????????????



Please give me some ideas of what you would like for us to do together as a club. If you have an interest to share or an activity that you enjoy, we can try to set it up!

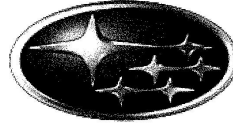
REMEMBER ... this is your club and you have opportunities available to participate. Be involved with these outings. Enjoy your time with friends ~

AK

## CSC/SUBARU RACE SERIES SPONSORS OF THE MONTH

The following businesses have donated merchandise and/or certificates to the Crescent Ski Council. Their merchandise and certificates will be used as prizes to the top three finishers in each flight of the CSC Race Series. Please support these establishments and product lines at every possible opportunity.

**Think. Feel. Drive.™**



**SUBARU®**



*[www.Beautifulskier.com](http://www.Beautifulskier.com)*



# BOARD of DIRECTORS

## 2008/2009

| <u>POSITION</u>              | <u>NAME</u>                                       | <u>HOME<br/>PHONE</u> | <u>E-MAIL</u>                     |
|------------------------------|---------------------------------------------------|-----------------------|-----------------------------------|
| PRESIDENT                    | Ted Mueller                                       | 592 3405              | tedcancom@wmconnect.com           |
| VICE PRESIDENT               | Sam Linder                                        | 587 1315              | samlinder@yahoo.com               |
| TREASURER                    | Art Mall                                          | 433 8627              | mloart@aol.com                    |
| SECRETARY                    | Joy Bobo                                          | 433 0802              | joybobo@sunaccess.net             |
| MEMBERSHIP                   | Sam Linder                                        | 587 1315              | samlinder@yahoo.com               |
| PROGRAMS                     | <i>Open – Contact Ted if interested</i> - - - - - |                       |                                   |
| ACTIVITIES                   | Alison Kimball                                    | 814 5372              | akimball@bellsouth.net            |
| SPECIAL PROJECTS             | <i>Open – Contact Ted if interested</i> - - - - - |                       |                                   |
| FUNDRAISING &<br>ADVERTISING | Conni Harrell                                     | 592 3405              | tedcancom@wmconnect.com           |
| PUBLICITY                    | Marcy Cassady                                     | 585 1718              | mouseworks52@yahoo.com            |
| OVERNIGHT TRIPS              | Carol McCall                                      | (828) 859 5500        | mmccall1@alltell.net              |
| RACING                       | Mark McCall                                       | (828) 859 5500        | mmccall1@alltell.net              |
| CRESCENT REP.                | Conni Harrell                                     | 592 3405              | tedcancom@wmconnect.com           |
| PUBLICATIONS                 | Charlie Darling                                   | 599 6794              | gnilrad2a@bellsouth.net           |
| <i>*Web Site*</i>            | <i>Taylor Bomar</i>                               | <i>576 3776</i>       | <i>spartanburgskiclub@att.net</i> |

## **SUBARU VIP DISCOUNT PROGRAM**

Subaru is a proud sponsor of the Crescent Ski Council Racing program. Part of their sponsorship package this year included the VIP Discount Program for all CSC members. Qualifying members of any CSC club can purchase a new Subaru at 2% below dealer cost minus any incentives which are currently being offered. To qualify you must have been a member of Spartanburg Ski Club [or other CSC club] for at least 6 months. If you are interested please notify Mark McCall of your intent to participate.

Subaru will mail you the VIP information, which will include information about local dealers participating in the program. Once you have received the information you can go to a local dealer, pick out the Subaru you want, and the dealer will pull the invoice and let the purchaser know if there are any current incentives. Please take advantage of this benefit that Crescent Racing, through Ron Scott, has secured for all CSC clubs.

## **CLUB MEETINGS**

The Spartanburg Ski & Outing Club normally meets the first Thursday of each month at 7:00PM. We are located at the Chapman Cultural Center (West Wing) on East St. John Street in Spartanburg on the first floor. During the months of June, July and August, meetings are held, more informally, at different sites and times, therefore it is necessary to consult the club website or a current newsletter for time and location. April's meeting is held at the Piedmont Club.

### **Become a Member**

A copy of our membership application is located at the following web address:

**<http://www.spartanburgskiclub.org/membership/ssocappl.doc>**

**SPARTANBURG SKI & OUTING CLUB**

**P.O. Box 2864**

**Spartanburg, SC 29304**