

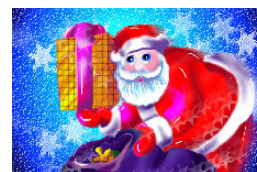
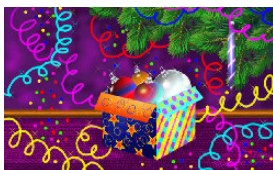
# SPARTANBURG SKI AND OUTING CLUB



*December 3*  
*Membership Meeting*  
*Page 5*

*December 19*  
*Christmas Gala*  
*Pages 13 & 7*

*January 16*  
*ESC Whitefish Trip*  
*Page 6*



**DECEMBER 2009**

<http://www.spartanburgskiclub.org>

## *Opening Remarks for December ...*

Well, tis the season once again! My goodness where did the year go? Time to reflect on the past year and look to the future!



Please join us on Thursday, December 3rd at the Chapman Cultural Center as we welcome Sylvia Rex, our program speaker who will share some personal stories with us about her childhood in war torn Hungary.

We have our Christmas party at Joy's on Saturday, December 19<sup>th</sup> and I hope you will all plan to attend as our hostess always prepares a beautiful table full of wonderful yummy this & that's! Don't forget we will also have the Chinese Auction ~ so bring a wrapped gift and have some fun! What will you get?

Be sure to sign for a cabin at Roan Mountain ~ that is always a good time for everyone and the deadline is quickly approaching, so please see Marcy if you want to spend a weekend in the mountains!

We have lots of ski trips and races planned over the next few months, so I wish for all on the slopes ~ a happy, healthy and safe winter season! Our racers are ready to tear it up! Good luck ...

And, may I extend to all of you, a very happy holiday wish. I hope you will be surrounded with good friends and family as you celebrate the season and the days to come

*Alisa L. Kenball*

## CSC/SUBARU RACE SERIES SPONSORS OF THE MONTH

The following businesses have donated merchandise and/or certificates to the Crescent Ski Council. Their merchandise and certificates will be used as prizes to the top three finishers in each flight of the CSC Race Series. Please support these establishments and product lines at every possible opportunity.

Think. Feel. Drive.™



**SUBARU**

**TAOS**



WINTER PARK



**JACKSON  
HOLE**



SPYDER



# December 2009

Sun	Mon	Tue	Wed	Thu	Fri	Sat
★ Steamboat Race & Ski Camp		1 WHITEFISH Final Payment	2	3 Club Membership Meeting page 5	4	★ 5
★ 6 	★ 7	★ 8	★ 9	★ 10	★ 11	★ 12
13	14	15 Final Payment ROAN MTN. page 14	16	17 Board Meeting @ Pat Lee's	18	19 Christmas Party page 13
20 Newsletter Deadline 8:30am	21	22	23	24	25 	26
27	28	29	30	31		

*For more Scheduling, see Facing Page 5*

## **SCHEDULE of CURRENT and/or UPCOMING EVENTS**

*Mark Your Calendars !*

### **January 2010**

16 ~ 23

CSC Whitefish Trip > page 6

### **February 2010**

5 ~ 7 weekend

Roan Mountain > page 14

27 Saturday

Club Race @ Sugar Mountain

### **March 2010**

4 ~ 7 weekend

Silvercreek Races > page 6

|||||

## *December Meeting*

Our December speaker is Sylvia Rex, a 40 year resident of Spartanburg. As a child she lived in Budapest, Hungary during World War II. She spent her 8<sup>th</sup> through 12<sup>th</sup> years hiding in an apartment with several other persons. Please join us as she shares her wartime experiences with us. Since she has moved to Spartanburg, she has become a member of the South Carolina Arts Commission, and has been an Artist in Residence at schools all over South Carolina. She shares her knowledge of worldwide Folk Dancing and Folklore during her time in the schools.

Upcoming programs include the January chili cook-off, annual gag awards, and the Piedmont Club. Anyone willing to host a summer meeting social similar to what we did last summer, please contact me.

Looking forward to seeing you at our meeting. Social at 7:00, speaker to begin around 7:25.

*Jan Sarratt, Program Director*

## *Western Ski Trippers-Steamboat & Whitefish*

You have each been e-mailed a CSC Medical Information Form. Please print and complete these as soon as possible and provide to Marcy, your trip director, no later than the December 3<sup>rd</sup> membership meeting. These may be mailed to 804 Palmetto Street, Spartanburg, SC 29302. If you have not signed up for either of these trips and now want to go, there was space last I knew. Contact me ASAP! Marcy Cassady [mouseworks52@yahoo.com](mailto:mouseworks52@yahoo.com) or 585-1718 or 494-5720



# Spartanburg Ski Club Race Team

We had a good sign-up and have the following members listed for this winter racing:

**Taylor Bomar, Kay Buzby, Marcy Cassady, Sam and Daniel Linder, Carol, Mark, Kevin and Katelin McCall, Elke Schoellkopf and Kent Welke.** Our young hot shots are training hard for school, and we are looking forward getting them back in our team.

We are a diverse group with a broad range of handicap, interest and age; hungry for the first snow and race. The season will start with a CSC Training at Appalachian at **Dec 7** and Sugar Mt Race Camp at **Dec 11 to 13**; and the first race weekend at Appalachian on **Dec 19 & 20**. This season, we will start with a by 10 points adjusted CSC handicap to be more even with the Nastar rating.

Please ask your friends to join us anytime throughout the season. You may establish a handicap anytime at a Race-weekend or a Nastar race.

**Race director Sam Linder.**

\$\$\$\$\$\$\$\$\$++++++\$\$\$\$\$\$\$\$\$

# SILVERCREEK – MARCH 4-7<sup>TH</sup>, 2010

If you're looking for a shorter ski-in/ski-out trip for this season, the Snowshoe/Silvercreek weekend is for you. Most folks ski the long Cup Run at Snowshoe on Friday and the more peaceful Silvercreek on the weekend. For Snowboarders, Silvercreek offers a great terrain park with half-pipe. If you're interested in this great opportunity, see the November newsletter for details and forms and contact your club trip director, Marcy Cassady at [mouseworks52@yahoo.com](mailto:mouseworks52@yahoo.com)

**ALPINE SKI CENTER**  
*Holiday Sale*  
**Starts Wednesday Nov 16th - Dec 24th**  
**Holiday Shopping made easy!**

- Best selection of ski and snowboard gear
- Special holiday pricing throughout the store
- Experienced staff Alpine Satisfaction Guaranteed
- Special Lay-Away Program 20% down, payoff by X-mas



**Greenville's #1 Ski/Snowboard Shop**  
**2104 Augusta Street 864-241-0550**

Sign up for sale alerts & deal emails today at [AlpineskiCenter.com](http://AlpineskiCenter.com)!  
 Plus by signing up, you are automatically entered in a chance to win a \$2,000 gift every 2 weeks during the season.  
 Sign up today at [www.alpineskiCenter.com](http://www.alpineskiCenter.com)

Find us on Facebook

## CHINESE AUCTION



Once again we will have a Chinese Auction at the Christmas party, and once again ... you never know what you're going to go home with until the last gift is opened! If you want to play, please bring a wrapped gift (\$10 value) and put it under Joy's Christmas tree - sign the list and wait and see!

*Alison*



## CRESCENT SKI COUNCIL SPRING CONVENTION

April 22 - 25, 2010  
Kingston Plantation  
9800 Queensway Blvd.  
Myrtle Beach, SC  
843-449-0006

### LODGING INFORMATION

#### SITE INFORMATION

Kingston Plantation is a 145-acre oceanfront paradise complete with beautifully landscaped grounds and sparkling white sand beaches. Enjoy SPLASH!, the 50,000 square foot pool complex where you can swim, float, sun or just relax. There is a restaurant and lounge on the premises. The Sports and Health Club features an indoor lap pool, cardio-vascular equipment, sauna, whirlpool, and 13 tennis courts.

#### LODGING UNITS

The Kingston Plantation offers well-furnished and completely equipped condos and villas. Amenities include a full kitchen with coffee maker, microwave and dishwasher, washer and dryer, cable TV, telephones, and maid service.

#### PRICE PER PERSON:

##### **ON-SITE 1 BEDROOM/1 BATH CONDO (1 queen)**

# of People Per Unit	2
2 Nights Stay	\$170
3 Nights Stay	\$241

##### **ON-SITE 2 BEDROOM/2 BATH CONDO (1 queen; 2 twins; Queen-sized sofa)**

# of People Per Unit	2	3	4	5	6
2 Nights Stay	\$190	\$141	\$116	\$100	\$91
3 Nights Stay	\$271	\$195	\$158	\$136	\$121



**BRIGHTON TOWER – OCEAN VIEW 2 BEDROOM/2 BATH CONDO** (1 queen;  
2 twins; Queen-sized sofa)

# of People Per Unit	2	3	4	5	6
2 Nights Stay	\$257	\$186	\$140	\$127	\$113
3 Nights Stay	\$371	\$262	\$208	\$176	\$154

**\*OFF-SITE FEE: \$45.00**

**\*ONE EVENT ONLY FEE: \$25.00** (EARLY BIRD, TRADE SHOW, FRI. NIGHT PARTY, SAT. NIGHT PARTY)

Please designate which one you will be attending. If your name isn't on the door list, you will have to pay at the door.

**PRICE INCLUDES:**

Lodging and Taxes

\*Early Bird Reception on Thursday Night

\*Trade Show on Friday Night\*\*

\*DJ Party on Friday Night\*\*

Complete use of Sports & Health Club

\*Beach Olympics on Saturday

\*Saturday Night Theme Party w/DJ\*\*

\*\*Includes complimentary beverages

**NOTE:** All lodging shall be assigned to clubs. Use the Club Registration Form to reserve all units.

@@

A young man named John received a parrot as a gift. The parrot had a bad attitude and an even worse vocabulary. Every word out of the bird's' mouth was rude, obnoxious and laced with profanity. John tried and tried to change the bird's attitude by consistently saying only polite words, playing soft music and anything else he could think of to "clean up" the bird's vocabulary.

Finally, John was fed up and he yelled at the parrot. The parrot yelled back. John shook the parrot and the parrot got angrier and even ruder. John, in desperation, threw up his hand, grabbed the bird and put him in the freezer. For a few minutes the parrot squawked and kicked and screamed. Then suddenly there was total quiet. Not a peep was heard for over a minute.

Fearing that he'd hurt the parrot, John quickly opened the door to the freezer. The parrot calmly stepped out onto John's outstretched arms and said "I believe I may have offended you with my rude language and actions. I'm sincerely remorseful for my inappropriate transgressions and I fully intend to do everything I can to correct my rude and unforgivable behavior."

John was stunned at the change in the bird's attitude. As he was about to ask the parrot what had made such a dramatic change in his behavior, the bird continued, "May I ask what the turkey did?"

*Wishing you a very Happy Thanksgiving!!!*





CLUB NAME: \_\_\_\_\_  
 COORDINATOR NAME: \_\_\_\_\_  
 ADDRESS: \_\_\_\_\_  
 CITY, STATE, ZIP: \_\_\_\_\_  
 HOME PHONE: \_\_\_\_\_ WORK PHONE: \_\_\_\_\_  
 EMAIL: \_\_\_\_\_

[illegible]

I've been seeing quite a few of you around with your new T-shirt and it looks great! Don't get left out, there are still a few left and they would make a great stocking stuffer! Get yours at the next meeting or you can call me at 592-3405. They're still just \$10.00. Look forward to hearing from you!

# Conni Harrell

**ALPINE SKI CENTER**

**New Season, New Gear, Same Experts.**

**Greenville's #1 Ski/Snowboard Shop**  
 2104 Augusta Street 864-241-0550

Sign up for sale alerts & deal emails today at [Alpineskicenter.com](http://Alpineskicenter.com)!  
 Plus, as signing up, you are automatically entered in a contest to win a \$25 Gift Card every 2 weeks during the season.  
 Sign up today at [www.alpineskicenter.com](http://www.alpineskicenter.com)!

Find us on Facebook

## *CLUB ADVERTISING*

We are very fortunate our club members have a diverse range of business expertise. If you have a business and wish to list your business card or any ad in our newsletter, please contact me. Ads start at as little as \$10.00 per month. If you have friends or family with a business and would like to advertise, we also have low rates for them. . I can be contacted at or 592-3405 or [tedcancom@wmconnect.com](mailto:tedcancom@wmconnect.com)

Thanks, Conni Harrell



**Ron Scott, Race Director**

H 919/362-5689

**Rscott013nc.rr.com**

## **2009/2010 CSC/Subaru Race & Terrain Park Competition Schedule**

December 5-12 2009	<i>Steamboat Race Camp Call Sports Am.Tours 800 876 8551</i>
December call 2009	<i>Killington Race Camp Call P.J. @ 800 432 0100</i>
December 6 2009	<i>CSC Development Training at Appalachian 8:45</i>
December 11-13 2009	<i>Sugar Mt. Race Camp Call Kim Jöchl 828 898 4521 x224</i>
January 2010	<i>Timberline, WV Call John Lutz 304 866 4801 Multi. Session</i>
January 24, 2010	<i>CSC Development Training at Appalachian</i>

### **Race Format - Two runs of Slalom on Saturdays and two runs of Giant Slalom on Sundays**

<b>December 19&amp; 20, 2009</b>	<b>Appalachian, NC Race</b>	<b>9:30</b>
<b>January 8,9, &amp; 10 ,2010</b>	<b>8<sup>th</sup> Gate Training at App.</b>	<b>2-4 &amp; 6:30-8:30</b>
	<b>9<sup>th</sup> SL at Sugar Mt.</b>	<b>9:00</b>
	<b>10<sup>th</sup> GS at Sugar Mt.</b>	<b>9:00</b>
January 16-23, 2010	Crescent Ski Council Ski Week	
<b>January 30 – 31, 2010</b>	<b>Appalachian Mt., NC Race</b>	<b>9:30</b>
February 1, 2010	Cupp Run Challenge at Snowshoe, WV	
<b>February 6 &amp; 7, 2010</b>	<b>Beech Mt., NC Race</b>	<b>9:30</b>
<b>February 20 &amp; 21, 2010</b>	<b>Sugar Mt., NC</b>	<b>9:00</b>
March 7, 2010	Dick Trundy/Sugar Cup GS Sugar Mt.	9:00
<b>March 5, 6, &amp; 7, 2010</b>	<b><u>Crescent Cup</u>, SilverCreek, WV</b>	<b>9:30</b>
March 5-7, 2010	Governor's Cup Race at Timberline, WV kathysaumure@cs.com	
<b>March 25 - 28, 2010</b>	<b>NASTAR Finals</b>	<b>Rich Mead</b>

**DEC. 5-12, 2008** CSC Racing's 26<sup>th</sup> RACE CAMP @ STEAMBOAT-START PLANNING NOW!

# *Spartanburg Ski & Outing Club*

## *Christmas Gala*

Saturday, December 19<sup>th</sup>, 2009

6:30 pm ~ Until

152 Bernice Snow Road, Hostess ~ Joy Bobo

433-0802 for directions

Please join us for heavy hors d'oeuvres, spirits of all kinds  
and the always popular, Chinese Auction!

The cost is \$15 per member, \$20 for guest/non-member and  
payment in advance is required to insure we have enough good  
stuff.

The deadline WILL be Tuesday, December 15<sup>th</sup>.

(Racers excluded ~ pay at the door if there is no snow!!!)

Make check payable to SSOC and either give to me or mail to

166 Ivy Circle

Inman SC 29349

No children under 12 years of age please.



*Misa*

## **2010 CRESCENT BEACH CONVENTION**

One of my favorite events of the year is the Crescent Ski Council's Convention at the Kingstree Plantation on the southern edge of N. Myrtle Beach. There's something included for all interests and tastes from just walking the beach, golf, tennis, biking, the trade show with the best opportunity of the year to learn about ski resorts both domestic and abroad, walking the beach, beach games with the other clubs like volleyball, bocce, cornholes, horseshoes and a "slalom course", just walking the beach, the disco party Friday night and costume party with band Saturday night or you can just go fly a kite. You can be as active or leisurely as you wish.



Marcy Cassady - Mouseworks52@yahoo.com.

## Annual Club Roan Mountain Weekend, February 5-7, 2010

*Sign-ups for the annual club weekend in the cabins at Roan Mountain, TN State Park February 5-7, 2010 began at the October membership meeting. Come Friday at your leisure and spend Saturday skiing, hiking or shopping as you wish. Then Saturday evening we'll gather after dinner with beverages provided by the club (or your own special choice). Bring your guitar, photos or movies to share or just your sparkling personality. This is the best opportunity of the year to get to know your fellow club members better and for family time-bring the kids &/or grandkids. Sunday you can ski or hike more or just have a leisurely home. We have the 10 newest to who pays for at least half of the payments are due to be received by we'll have to release any cabins not paid for. Each cabin has a master bedroom with half bath(except handicapped accessible cabin) downstairs (\$80) and two loft areas upstairs (\$60 each) with full bath, kitchen and great room area with wood stove-wood provided by the park) downstairs. Don't miss out on this great event!*



*Marcy Cassady, Trip Director*  
[Mouseworks52@yahoo.com](mailto:Mouseworks52@yahoo.com)  
585-1718 or 494-5720

+++++

### LAKE BOWEN HOUSE FOR RENT

2 or 3 Bedroom --- 2 Full Baths --- Living Room --- Sunroom  
Convenient to Hwy 9 --- Good Waterfront  
Storage Building  
Call Ted at 592-3405

# BOARD of DIRECTORS

## 2009/2010

<u>POSITION</u>	<u>NAME</u>	<u>HOME PHONE</u>	<u>E-MAIL</u>
PRESIDENT	Alison Kimball	814 5372	akimball@bellsouth.net
PAST PRESIDENT	Ted Mueller	592 3405	tedcancom@wmconnect.com
VICE PRESIDENT	Sam Linder	587 1315	samlinder@yahoo.com
TREASURER	Art Mall	433 8627	mloart@aol.com
SECRETARY	Joy Bobo	433 0802	joybobo@sunaccess.net
MEMBERSHIP	Ted Mueller	592 3405	tedcancom@wmconnect.com
PROGRAMS	Jan Sarratt	489 1606	sarrattjpex@yahoo.com
ACTIVITIES	Alison Kimball	814 5372	akimball@bellsouth.net
FUNDRAISING & ADVERTISING	Conni Harrell	592 3405	tedcancom@wmconnect.com
PUBLICITY	Pat Lee	472 2253	patricia159@windstream.net
OVERNIGHT TRIPS	Marcy Cassidy	585 1718	mouseworks52@yahoo.com
RACING	Sam Linder	587 1315	samlinder@yahoo.com
CRESCENT REP.	Conni Harrell	592 3405	tedcancom@wmconnect.com
SOCIALS	Diane Butscher	592 3910	dianebutscher@yahoo.com
PUBLICATIONS	Charlie Darling	599 6794	gnilrad2a@bellsouth.net
<i>*Web Site*</i>	<i>Taylor Bomar</i>	<i>576 3776</i>	<i>spartanburgskiclub@att.net</i>

## **SUBARU VIP DISCOUNT PROGRAM**

Subaru is a proud sponsor of the Crescent Ski Council (CSC) Racing program. Part of their sponsorship package this year included the VIP Discount Program for all CSC members. Qualifying members of a CSC club can purchase or lease a new Subaru at 2% below dealer cost minus any incentives which are currently being offered. To qualify you must have been a member of Spartanburg Ski and Outing Club [or other CSC club] for at least 6 months. If you are interested please notify Sam Linder of your intent to participate. Subaru will mail you the VIP information, which will include information about local dealers participating in the program. Once you have received the information you can go to a local dealer, pick out the Subaru you want, and the dealer will pull the invoice and let the purchaser know if there are any current incentives. Please take advantage of this benefit that Crescent Racing, through Ron Scott, has secured for all CSC clubs.

## **CLUB MEETINGS**

The Spartanburg Ski & Outing Club normally meets the first Thursday of each month at 7:00PM. We are located at the Chapman Cultural Center (West Wing) on East St. John Street in Spartanburg on the first floor. During the months of June, July and August, meetings are held, more informally, at different sites and times, therefore it is necessary to consult the club website or a current newsletter for time and location. April's meeting is held at the Piedmont Club.

This club does **not** provide alcoholic beverages at membership meetings, but members are allowed to bring their own (BYOB) choices of beer or wine. Over indulgence is not condoned under any circumstances. Cups, ice and some soft drinks beverages are provided. Thank you.

### **Become a Member**

A copy of our membership application is located at the following web address:  
**<http://www.spartanburgskiclub.org/membership/ssocappl.doc>**



**SPARTANBURG SKI and OUTING CLUB**  
**P.O. Box 2864**  
**Spartanburg, SC 29304**