

SPARTANBURG SKI AND OUTING CLUB

June 4

Club Meeting

Butschers on Lake Bowen

page 9

June 9

Mini-Social - The Olive Garden

Page 2

July 10

Pool Party - Marcy Cassady's

Page 9

June 2010

<http://www.spartanburgskiclub.org>

President's Message

A big "Thank You" to Conni for organizing our troops for Music on Main. We had good weather, good music, good times and moved a lot of beer. Springtime also took some of our members out to the ball park to cheer on the Greenville Drive.

Thank you to the Butscher's for hosting our June meeting at their home on beautiful Lake Bowen. See you there. Because the first week of July is so busy with 4th of July happenings we will skip the July club meeting. We are planning a weekend trip to Cherokee

July 24 & 25. This will include the Oconaluftee Village, "Unto These Hills" outdoor drama and overnight at a campground. More information to follow.

Enjoy your summer but think snow for next winter.

Mark

June mini-social



The Mini Social for June 2010 will be held at *The Olive Garden* 1498 West Ezell Boulevard (864 595-4885) at 6:30, Wednesday June 9th. Check out their menu at <www.olivegarden.com> They have a great deal on their "unlimited" soup and salad. You can contact me at patricia159@windstream.net or call me at my home (864) 472-2253 to confirm. There will be a sign up sheet at our June 4th meeting at the Butschers'.

Pat Lee

2011 CRESCENT SKI TRIPS

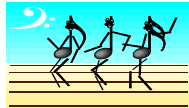
Crescent has announced the ski trips for next season. In addition to the annual Steamboat trip (Page 8), the two trips will be Taos, NM, January 15 ~ 22 (Page 10), and Ogden, UT, March 15 ~ 22. For more information about Ogden, watch for your future Newsletters, or go to the Crescent Ski Council website, it should have all the details very soon.



%%%

MUSIC ON MAIN VOLUNTEERS

Wow!!!! You guys exceeded all my expectations this year! As in the past you have come through again and I am really impressed. I had 20 volunteers already signed up by March 20, and almost 2 months before we had to work. And I had at least 5 club members on stand-by at the event to fill in as needed. Not only that, but a few others that had not signed up, showed up! Our club must have been represented with about 28 or 30 members total. Go team!!!



Thank you all for showing your support to our club, by having so many team players it really made my job so easy. To those of you who traded off jobs, or filled in at many positions to give others a break. I really appreciate your help and flexibility. To those who stayed to help clean up, your efforts did not go unnoticed. I know the night was getting long but as you know, this too is part of our commitment to the city. It was a busy evening and I hope to have good news soon, as to what our profits were. Thanks again everyone!

Conni Harrell, Fundraising Chairperson

June 2010

Sun	Mon	Tue	Wed	Thu	Fri	Sat
		1	2	3	4 Club Membership Meeting @ Butscher's page 9	5
6	7	8 Mini-Social Olive Garden page 2	9	10	11	12
13	14 MADE IN  AMERICA Flag Day	15	16	17 Board Meeting @ Conni's	18 Newsletter Deadline 6:30pm	19
20 	21	22	23	24	25	26
27	28	29	30			

For more Scheduling, see Facing Page 5

SCHEDULE of CURRENT and/or UPCOMING EVENTS

Mark Your Calendars !

July

No Club Meeting scheduled

10 Saturday

Pool Party @ Marcy Cassady's > page 9

24 & 25 Weekend

Oconaluftee Village Weekend > page 2

August

7 Saturday

Club Meeting @ Bob & Pat Lee's > page 9

22 Sunday

Flat Rock Playhouse > page 6

September

4 Saturday

Pick Blueberries "Hike"

October

29~31

CSC Fall Convention

December

4~11

CSC Steamboat Springs > page 8

January 2011

15~~22

CSC Ski Trip ~ Taos, NM > pages 3 & 10

March 2011

12~~19

CSC Ski Trip ~ Ogden, UT > page 3

|||||

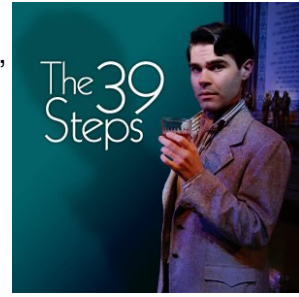
Every thinker puts some portion of an apparently stable world in peril.

-Arthur Kornhauser-

Those who cause divisions, in order to injure other people, are in fact preparing pitfalls for their own ruin.

-Chinese Maxim-

Broadway's longest-running comedy thriller! Mix a Hitchcock masterpiece with a juicy spy novel, add a dash of Monty Python, and you have *The 39 Steps*, a fast-paced whodunit for anyone who loves the magic of theatre! The cast of four, featuring Flat Rock Playhouse's own Scott Treadway, plays over 150 characters in this story about an ordinary man on an extraordinary adventure. *The 39 Steps* contains every single scene from the award-winning movie, including the first theatrical bi-plane crash ever staged.



Sunday, August 22 at 2:00 pm – Flat Rock Playhouse

Tickets are \$30 each and need to be paid in advance. Please make your check payable to SSOC and either give to me at a club function or mail to me at: 166 Ivy Circle, Inman SC 29349

Plan on heading over to Haus Heidelberg after the show ~ after all, that's becoming tradition!

Alison

CLUB ADVENTURES IN TRYON ON MAY 23

Ted, Conni, Herb, Dagmar, Taylor, Kathy, Marcy, Becky, Mark and Snappy met at FENCE for the first part of a day long adventure. After a little coaxing from Ted, Snappy decided the pond was to his liking and we bid him farewell. We then wandered through hardwood forests and across open fields.

Shortly after eating lunch on top of a huge horse jump we received a phone call from Charlie and Agnes. It seems the late arrivals had looked at their map upside down and proceeded in the opposite direction. We eventually rendezvoused and watched the horse show that was going on the equestrian side of FENCE.

Next on our agenda was an outdoor concert in downtown Tryon featuring member Kevin McCall on guitar and vocals with his church band "Broken Bread". Carol, Julika, Katelin, Amelia and Alaina joined us there. Our final stop of the day was the ever-popular Sidestreet Pizza. Bob and Dianne joined our ever-growing group there. It was a good day.

TENT for RENT ???

For rent: A portable shelter consisting of an oh so fashionable metallic silver flexible covering. This covering is supported by; not 2, not 4, but 6 vertical circular shaped galvanized rods in a coordinating silver white color. Each rod is secured to the surface of the earth with a lovely red shade of synthetic material affixed to a rigorous form of iron implanted into the upper stratum of the third rock from the sun. The comparative magnitude of the aforementioned portable shelter exists to be 18 by 20 measurable English feet. This sheltering will shield your assemblage general atmospheric conditions. It may be employed for any number of logical (or illogical) operations, ie: consuming nourishment or libations to one's body, protecting one's epidermis from the self laminating orb that gives heat and light to the solar system, or to shield existing inhabitants or material from moisture precipitating from the atmosphere. Said shelter is available to every part of the Ski and Outing Club membership for a financial commitment of not 50, not 45, not even 40, but only 35 dollars in US currency. More knowledge on this security shelter is attainable through any member maintaining a state of being on the board or by manipulating the digits of your hand to a communication device that connects one human being's speech to another's.

GREENVILLE DRIVE EXCURSION



Many thanks to Mike Rogers for planning our trip to Greenville for the ball game and dinner at Mellow Mushroom. The group had a great time and lots of laughs at the game with Greenville Drive's little shenanigans between innings. And since it was Armed Forces Day at the Park we had several low flyovers by military cargo carriers. A very entertaining night! Even though the Drive lost to the Lakewood, N.J. Blueclaws, Greenville was the only one to hammer in a homerun all evening. GO TEAM!

If you have an idea for a special event, and hopefully would like to organize it as Mike did, please let someone on the Board know and the Board will be glad to help you with it.

Conni Harrell

Dinner and the Theater

Thanks to all of you that showed up May 8th for “The Underpants” and dinner at Basil’s. We had a total of 16 people and as always had a great time. One thing this club does enjoy is the theater, and of course food and drink! It looks like the



Spartanburg Little Theater has some great shows for next season too, so we may be going back. Let’s continue to support them and as always the Chapman Cultural Center.

Oh, and I forgot, I think I see a Gag Award in someone’s future.

Conni Harrell



STEAMBOAT RACE AND SKI CLINIC DECEMBER 4 – 11, 2010



It’s almost that time of year again to sign up. Sign ups begin June 1 and end November 15 unless the trip is full before then. There are only 350 spots available so don’t delay. Sign ups will be directly with Sports America Tours. Each participant must fill out a REQUIRED application form to be confirmed on the trip. This form can be found on our website under DOC/LINKS. Base cost starts at \$899.00, 3 bedroom – 3 bath. Airfare will be on your own, but Sports America can also handle this for you if you wish. Paying by check? Make checks payable to S.A.T. (Sports America Tours) and mail (along with your application) to 141 Stony Cir. #155 Santa Rosa, Ca. 95401, or if paying by credit card call 800-8762557 or 707-575-7547. Sara is at extension #107. There is a 3% fee added to credit cards. Second payment is due October 19 and final payment is due December 1. For more information on this trip contact Carol McCall, or any Board Member. There will be more details in your July newsletter.

Conni Harrell

RELAX BY THE LAKE IN JUNE

Our Friday June 4 meeting takes us to a relaxing environment by the shores of Lake Bowen, a nice change for those of us who don't live there! We will meet at 6 PM at Bob and Diane Butscher's for a "bring a dish to pass dinner". The club will provide wine/beer/soda and you are welcome to bring your favorite beverage if it isn't mentioned on the club's list. Doors will open at 6:00 PM. So we can have a head count for beverage purchases – call Jan or Diane with your drink preferences so we can go shopping. Directions follow.

Looking ahead, Saturday, July 10 will take us poolside at Marcy's. It will also be a "dish to pass" with the above mentioned beverages. Saturday, August 7 we will go to Robert and Pat Lee's with a similar arrangement. We won't return to Chapman till the fall.

See you there!

Jan Sarratt
(864) 489-1606
sarrattjpex@yahoo.com

Directions to Butcher's:

Phone: 864-592-3910

Address: 180 Edgewater Road, Inman

From I-26/Rt 11 Exit #5

Take the frontage road, Compton Bridge Road, toward Spartanburg (like going to Elkie's) until you come to Foster Road (Like Elkie's). Turn left. Stay on Foster Road and go across I-26 to Edgewater Road. Take right. House on right.

From Rt 11/Rt 9

Take Rt 9 South about 2 miles toward Boiling Springs. Foster Road will be on your right. Turn right and stay until you come to Edgewater Road. Take left. House on right.

From I-26/ Rt 292 Exit # 10

Take Rt 292 away from Inman towards Rt. 9. Approx. 1 ½ mi to Rt 9. Turn left away from Boiling Springs. Approx. 2 mi., after crossing Lake Bowen, turn left onto Foster Road. Continue till you come to Edgewater Road. Take left on Edgewater Road. House on right.



SPARTANBURG SKI CLUB PRESENTS



TAOS

CRESCENT SKI WEEK

January 15-22, 2011

Your Package Includes:

❄ Seven nights deluxe lodging: Snakedance Condos or El Pueblo Lodge

❄ On mountain activities

❄ Mountain Tours

❄ Apres ski parties

❄ Five-day lift pass - Taos Ski Valley
Option to add days at Angel Fire & Red River

❄ Welcome Reception

❄ Farewell Dinner and Dance

❄ Airport & Resort Transfers

❄ Souvenir Crescent T-shirt!

❄ Discounted group lessons and ski rentals

❄ Optional Museum & Historic Site Tour

Snakedance - \$1189

El Pueblo - \$870

Airfare - \$462

For more information please

contact:

Carol McCall

828-859-5500

mmccall1@windstream.net

BOARD of DIRECTORS

2010/2011

<u>POSITION</u>	<u>NAME</u>	<u>HOME PHONE</u>	<u>E-MAIL</u>
PRESIDENT	Mark McCall	(828)859 5500	mmccall1@windstream.net
PAST PRESIDENT	Alison Kimball	814 5372	akimball@bellsouth.net
VICE PRESIDENT	Conni Harrell	592 3405	tedcancom@wmconnect.com
TREASURER	Ted Mueller	592 3405	tedcancom@wmconnect.com
SECRETARY	Joy Bobo	433 0802	joybobo@sunaccess.net
MEMBERSHIP	Ted Mueller	592 3405	tedcancom@wmconnect.com
PROGRAMS	Jan Sarratt	489 1606	sarrattjp@yahoo.com
ACTIVITIESsee Mark McCall....		
FUNDRAISINGsee Mark McCall....		
ADVERTISING	Conni Harrell	592 3405	tedcancom@wmconnect.com
PUBLICITY	Marcy Cassady	585 1718	mouseworks52@yahoo.com
OVERNIGHT TRIPS	Carol McCall	(828)859 5500	mmccall1@windstream.net
RACING	Sam Linder	587 1315	samlinder@yahoo.com
CRESCENT REP.	Carol McCall	(828)859 5500	mmccall1@windstream.net
SOCIALS	Pat Lee	472 2253	patricia159@windstream.net
PUBLICATIONS	Charlie Darling	599 6794	ssocnewsletter@gmail.com
<i>*Web Site*</i>	<i>Taylor Bomar</i>	<i>576 3776</i>	<i>spartanburgskiclub@att.net</i>

SUBARU VIP DISCOUNT PROGRAM

Subaru is a proud sponsor of the Crescent Ski Council (CSC) Racing program. Part of their sponsorship package this year included the VIP Discount Program for all CSC members. Qualifying members of a CSC club can purchase or lease a new Subaru at 2% below dealer cost minus any incentives which are currently being offered. To qualify you must have been a member of Spartanburg Ski and Outing Club [or other CSC club] for at least 6 months. If you are interested please notify Sam Linder of your intent to participate. Subaru will mail you the VIP information, which will include information about local dealers participating in the program. Once you have received the information you can go to a local dealer, pick out the Subaru you want, and the dealer will pull the invoice and let the purchaser know if there are any current incentives. Please take advantage of this benefit that Crescent Racing, through Ron Scott, has secured for all CSC clubs.

CLUB MEETINGS

The Spartanburg Ski & Outing Club normally meets the first Thursday of each month at 7:00PM. We are located at the Chapman Cultural Center (West Wing) on East St. John Street in Spartanburg on the first floor. During the months of June, July and August, meetings are held, more informally, at different sites and times, therefore it is necessary to consult the club website or a current newsletter for time and location. April's meeting is held at the Piedmont Club.

This club does **not** provide alcoholic beverages at membership meetings, but members are allowed to bring their own (BYOB) choices of beer or wine. Over indulgence is not condoned under any circumstances. Cups, ice and some soft drinks beverages are provided. Thank you.

Become a Member

A copy of our membership application is located at the following web address:
<http://www.spartanburgskiclub.org/membership/ssocappl.doc>



SPARTANBURG SKI and OUTING CLUB
P.O. Box 2864
Spartanburg, SC 29304